

# RI Orientation Maps

---



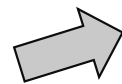
# Legend



Kitchens



Bathrooms



Outside directional arrows



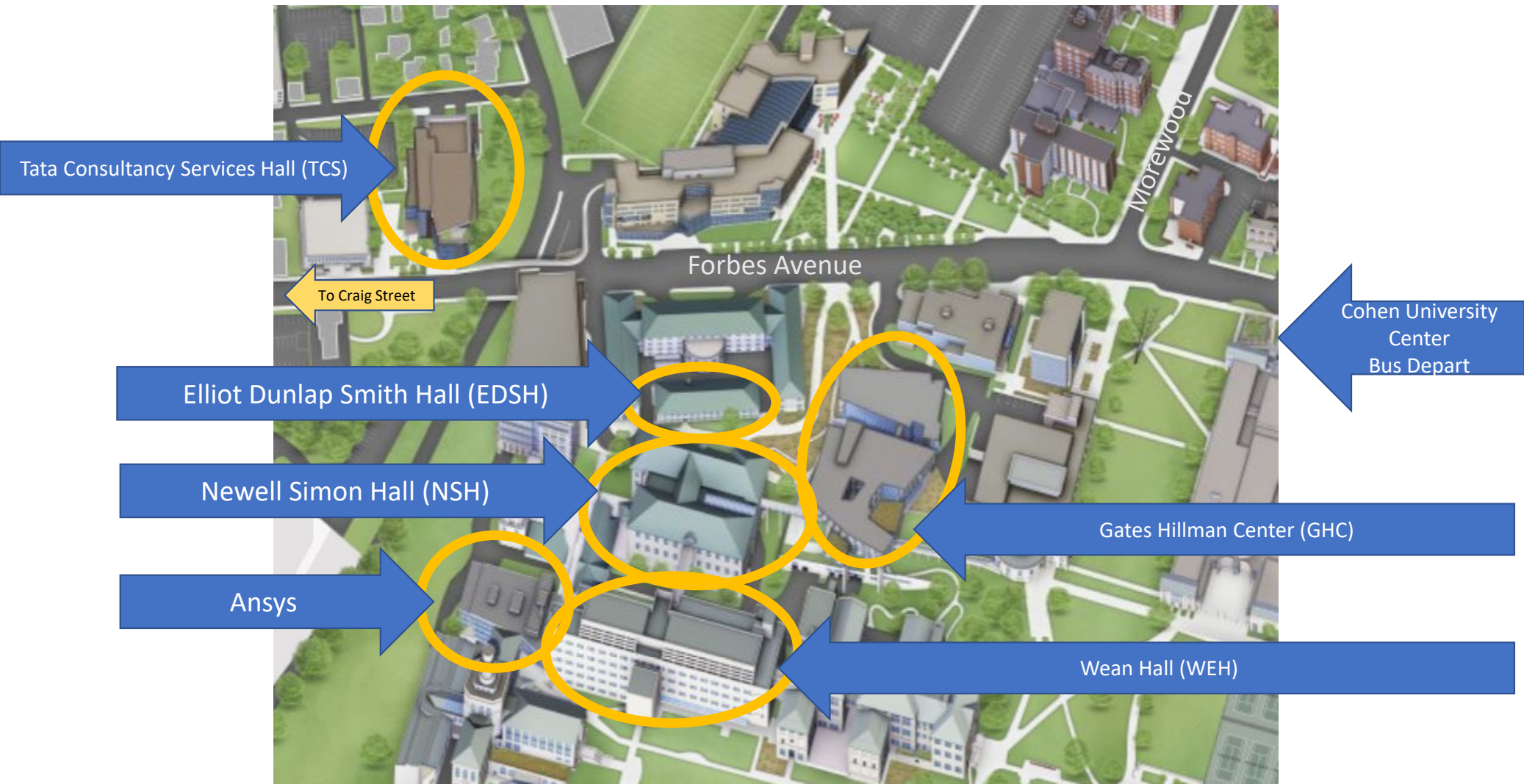
Elevators



Lab numbers and faculty names

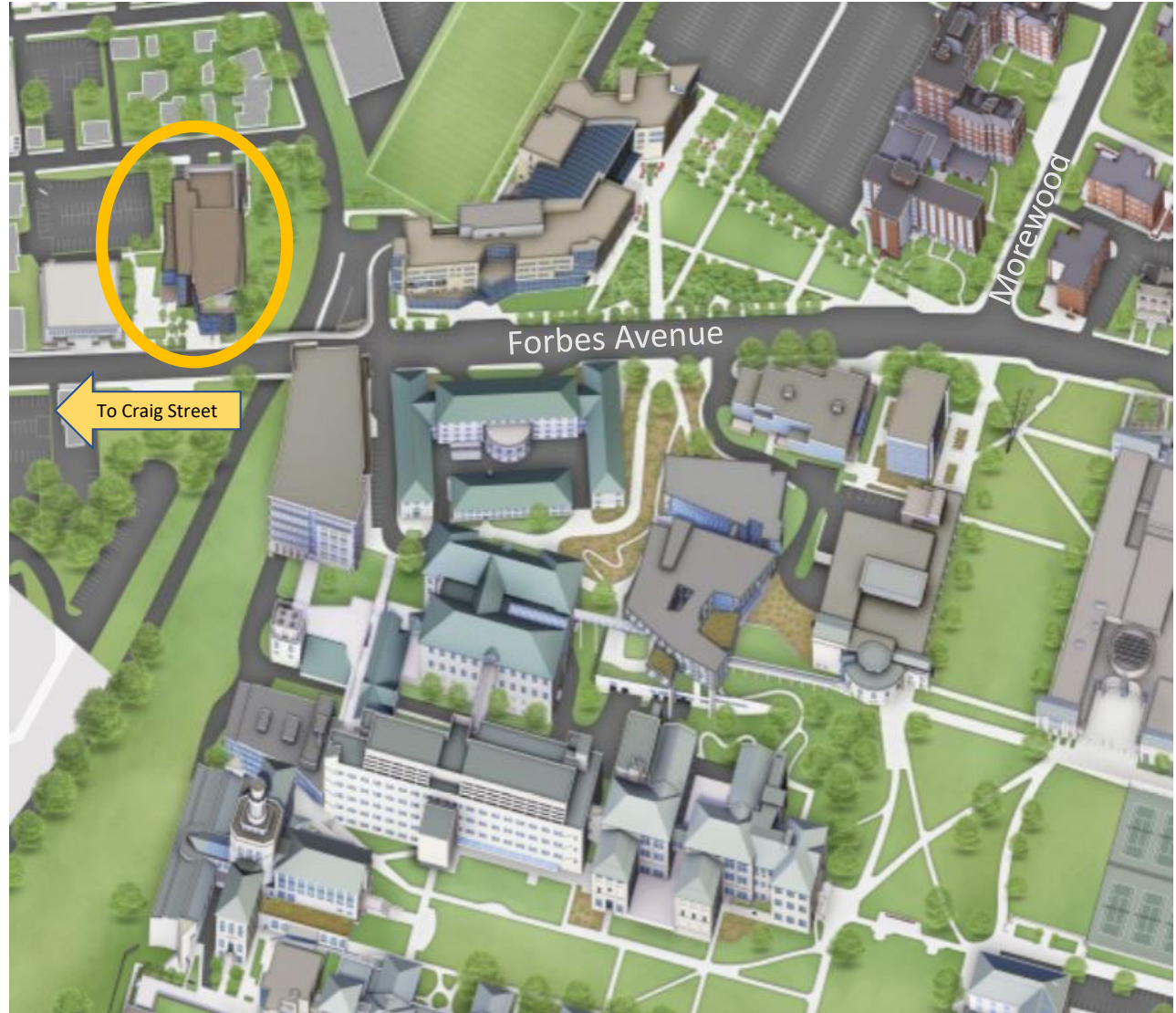


Conference Rooms, offices or other highly utilized areas.



Updated 8/20/23 (Fecich)

Tata Consultancy  
Services Hall  
(TCS)



Updated 8/20/23 (Fecich)

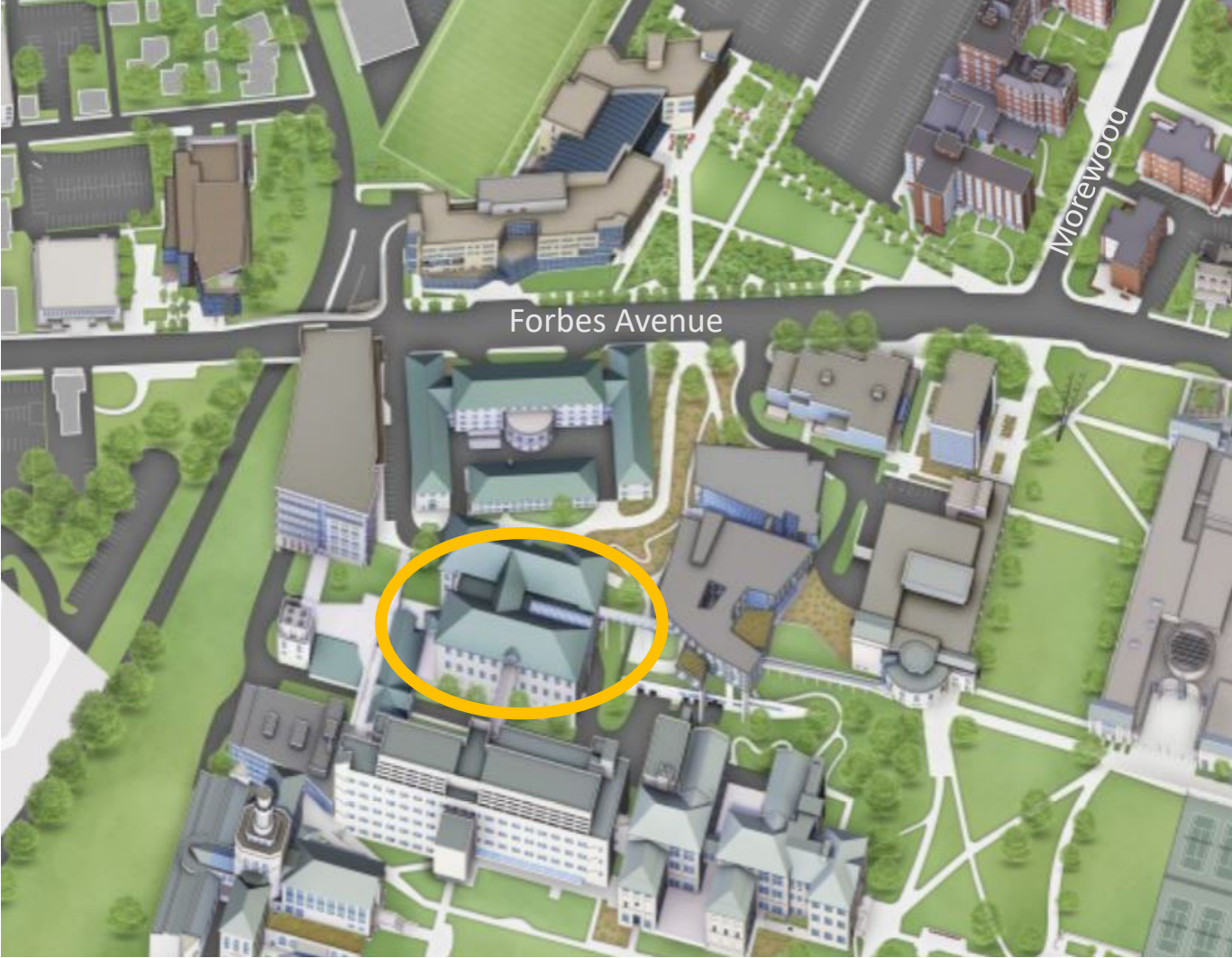
# TCS 4<sup>th</sup> Floor

Matthew Johnson-Roberson



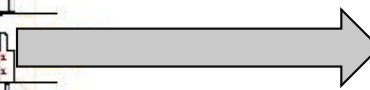
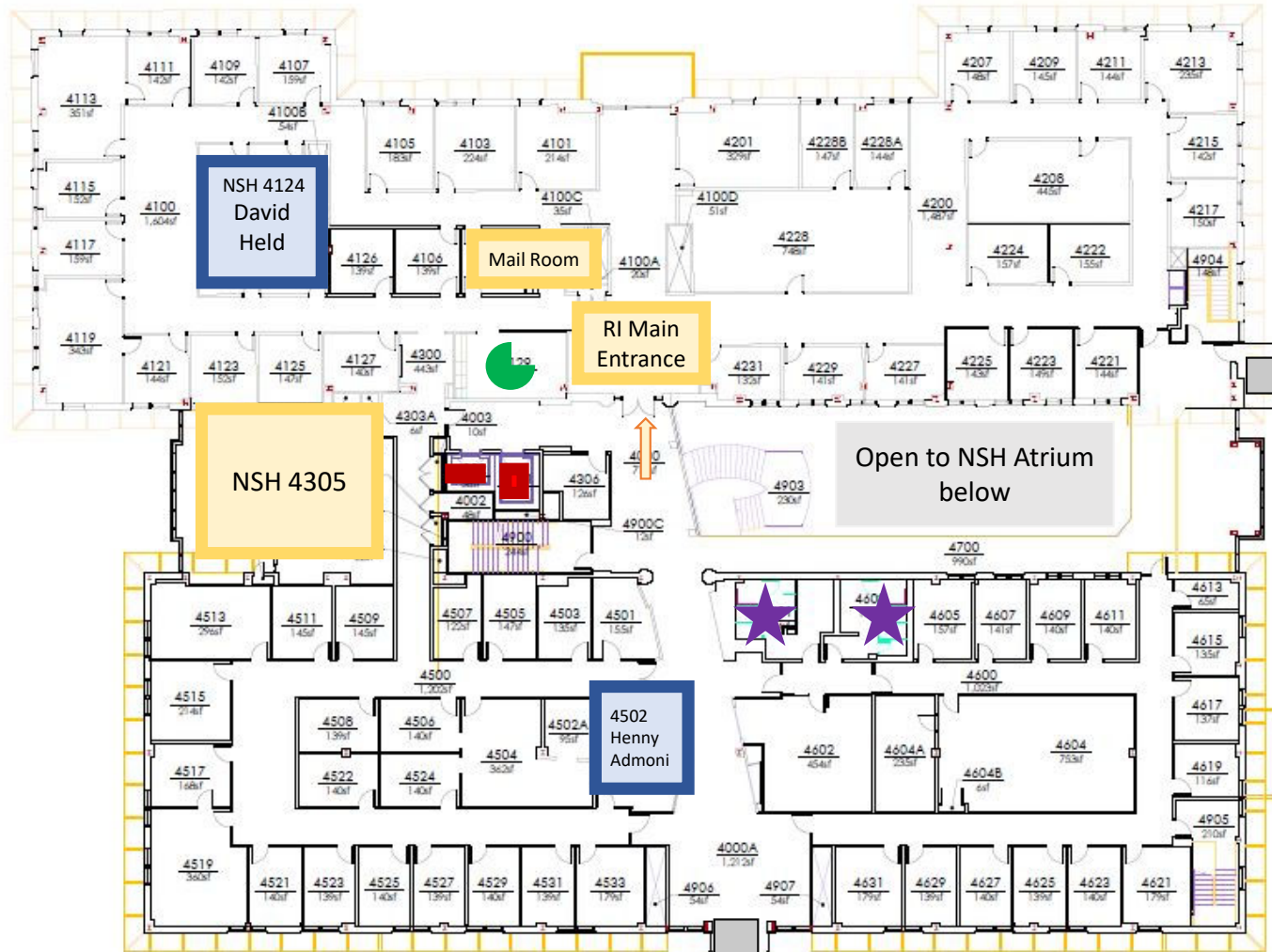
Updated 8/20/23 (Fecich)

Newell  
Simon Hall  
(NSH)



Updated 8/20/23 (Fecich)

# NSH 4<sup>th</sup> Floor



Inside walkway to GHC 4<sup>th</sup> Floor



Inside walkway to Wean 4<sup>th</sup> Floor

Updated 8/20/23 (Fecich)

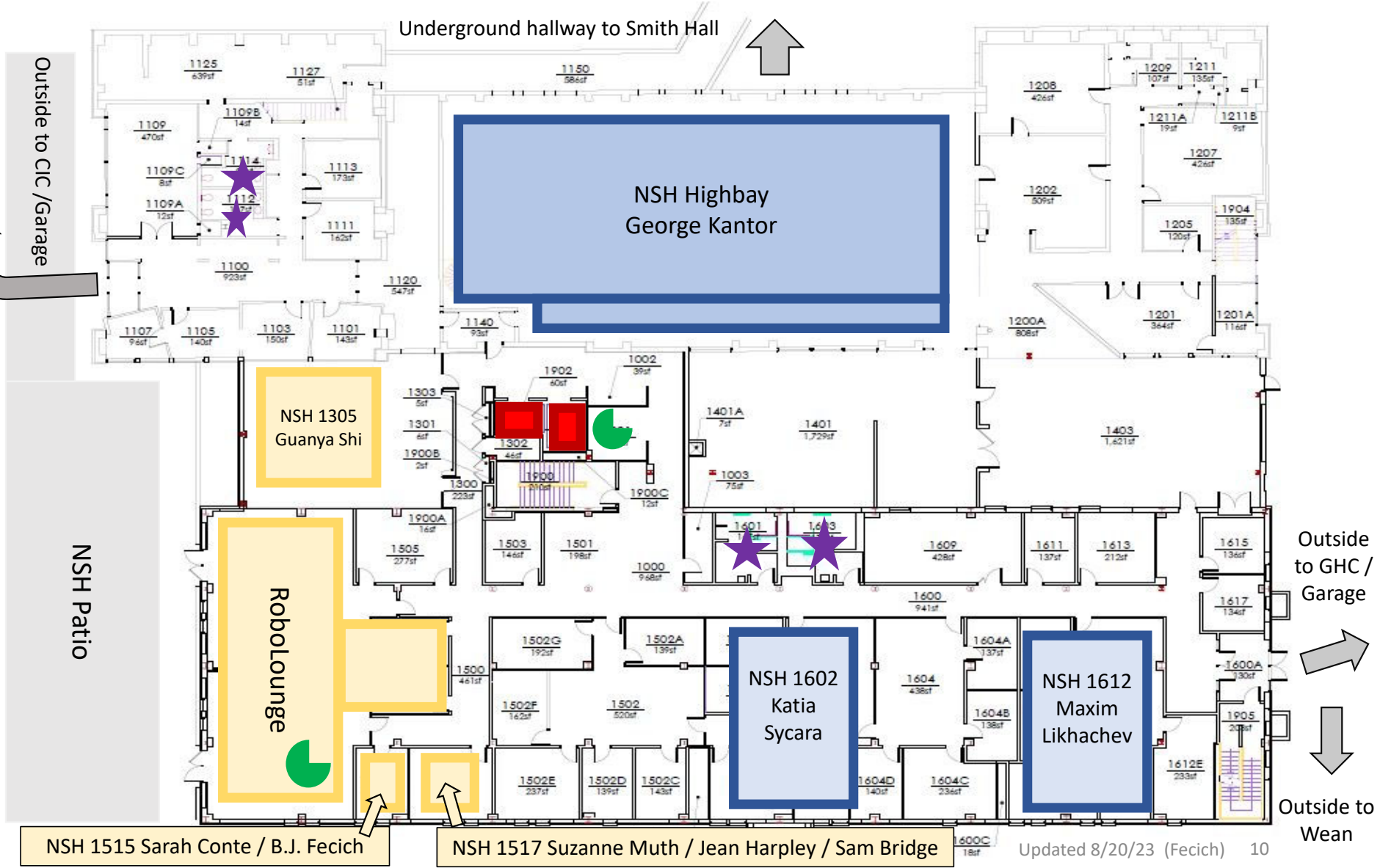




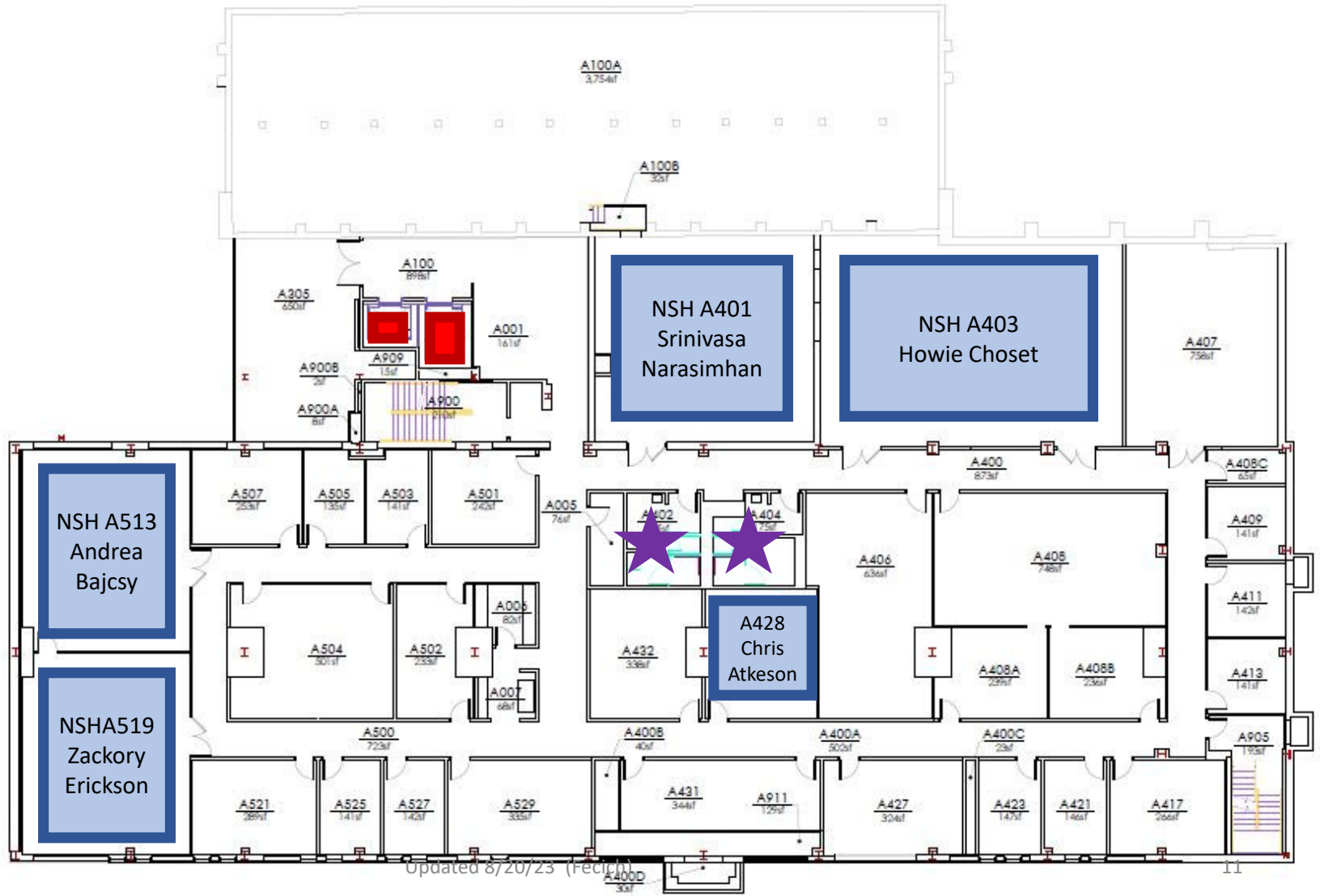
# NSH 2<sup>nd</sup> Floor



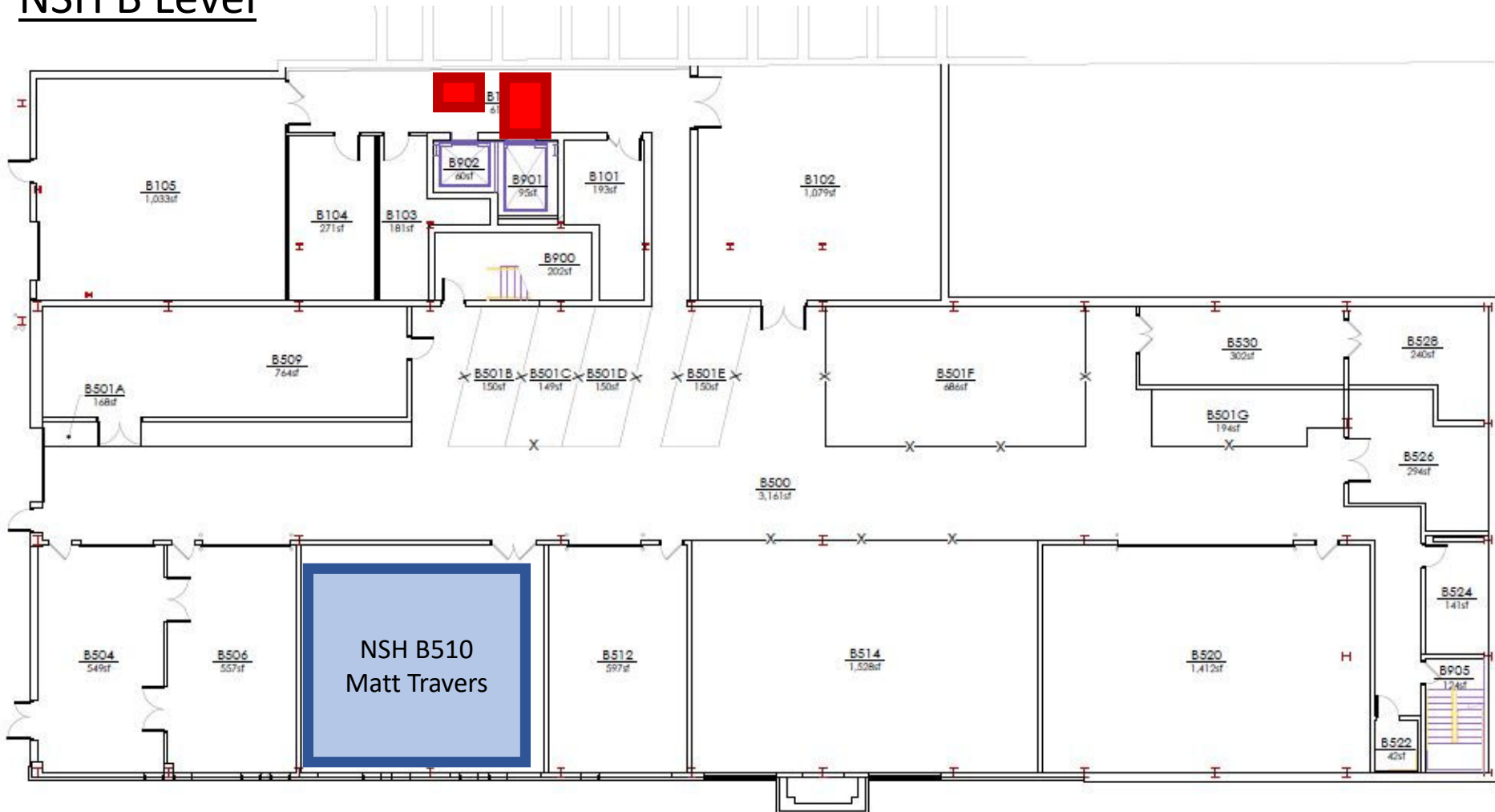
**NSH 1st Floor Ground Level**



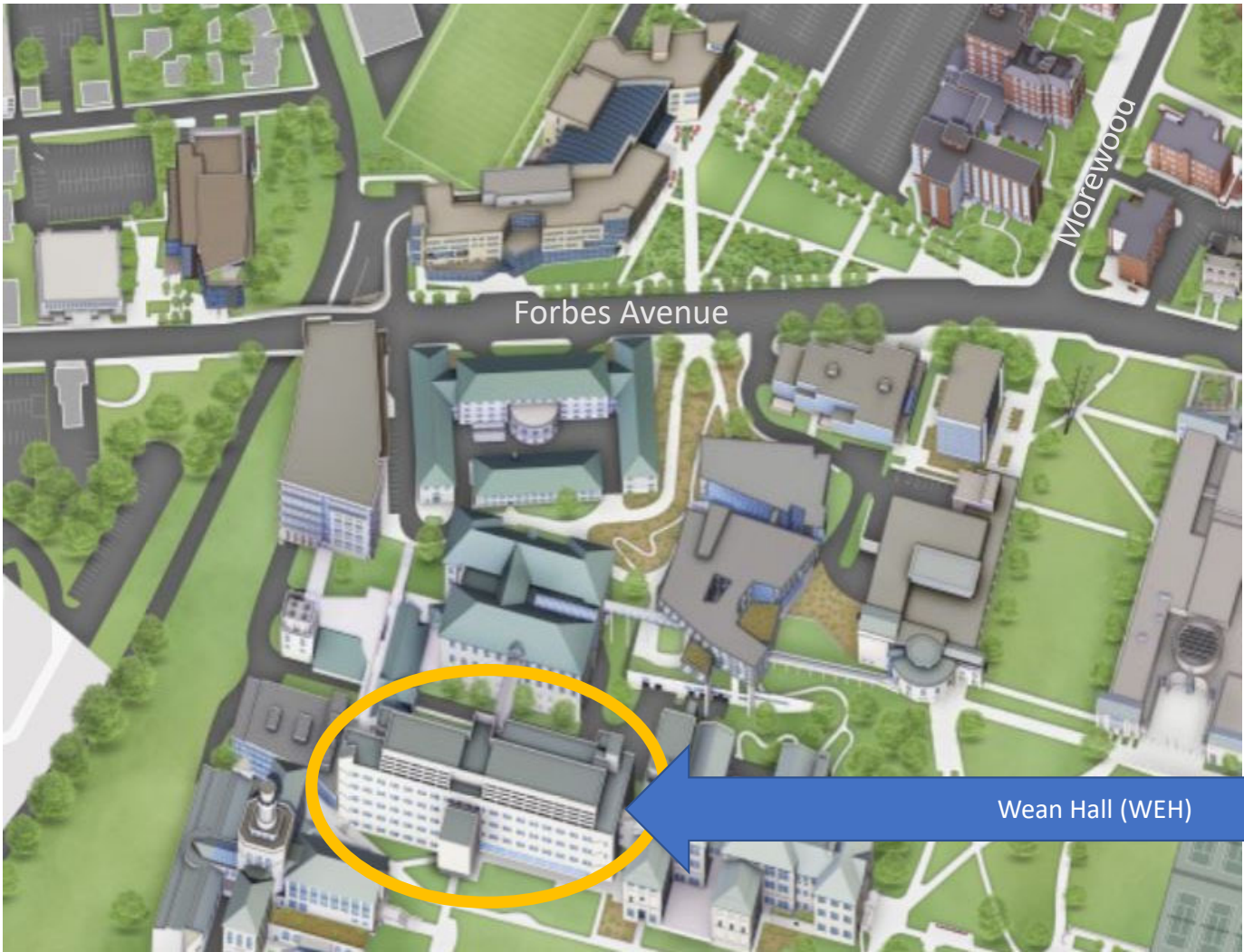
# NSH A Level



# NSH B Level

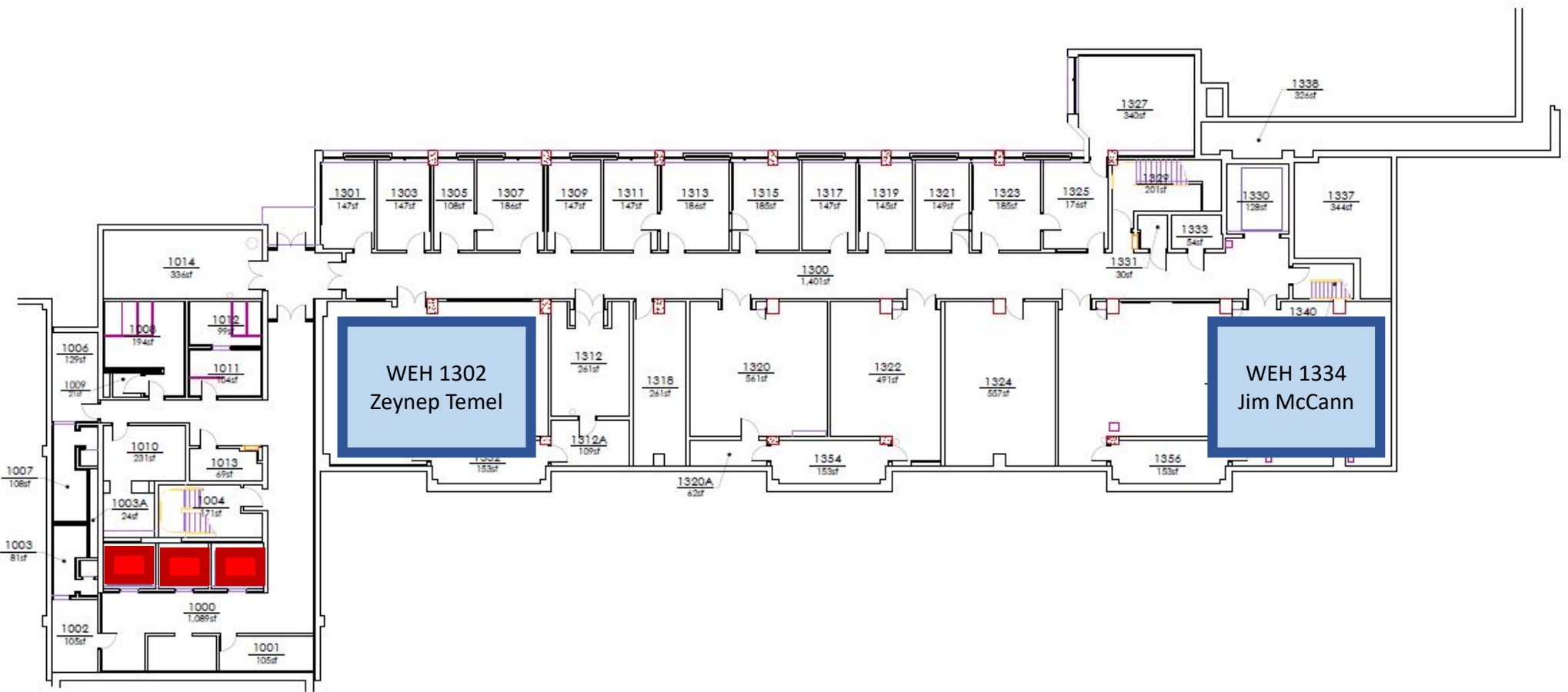


Updated 8/20/23 (Fecich)



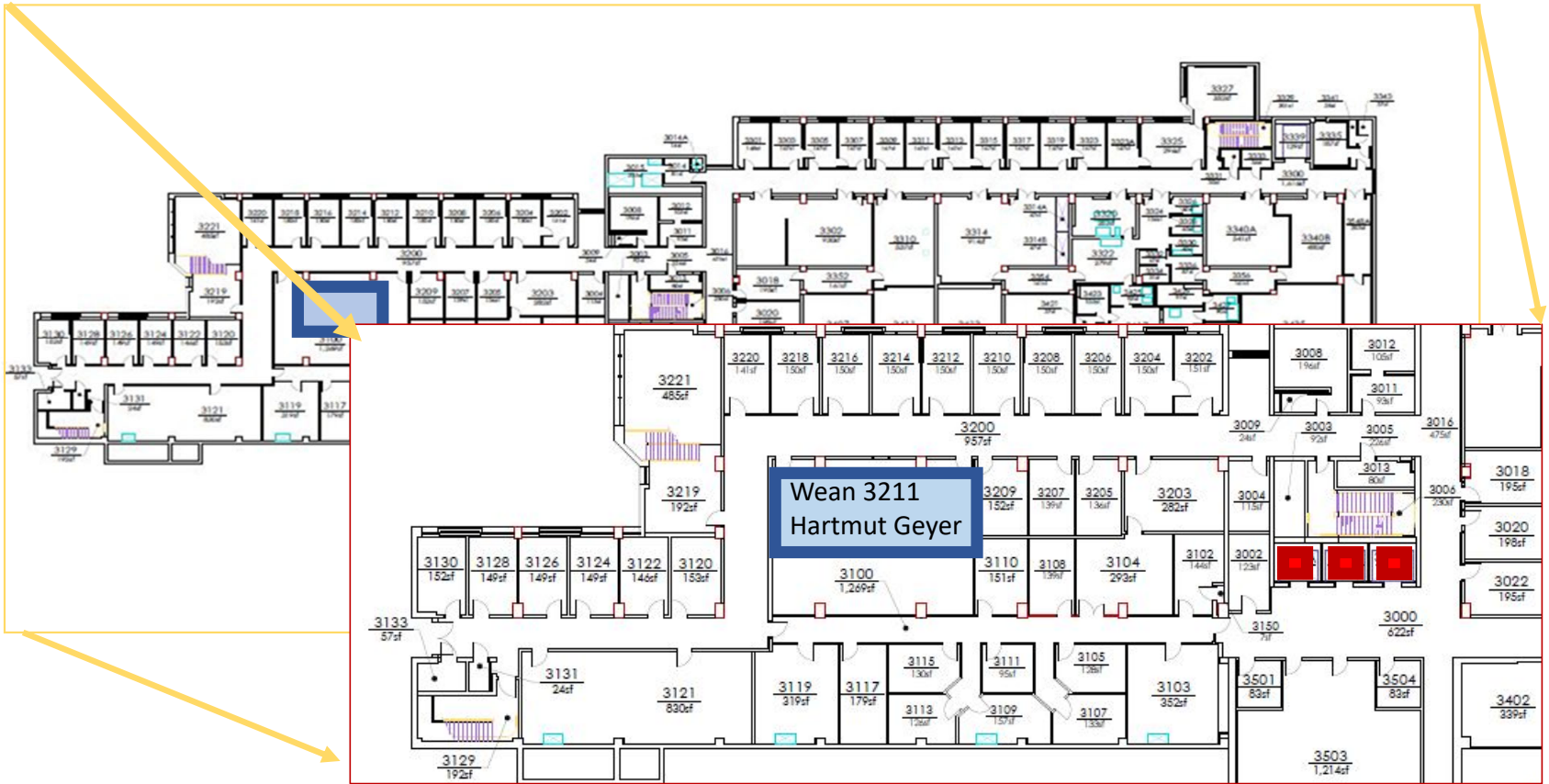
Updated 8/20/23 (Fecich)

# WEH 1<sup>st</sup> Floor



Updated 8/20/23 (Fecich)

# WEH 3<sup>rd</sup> Floor Close-up



Updated 8/20/23 (Fecich)

# WEH 3<sup>rd</sup> Floor - Extended view



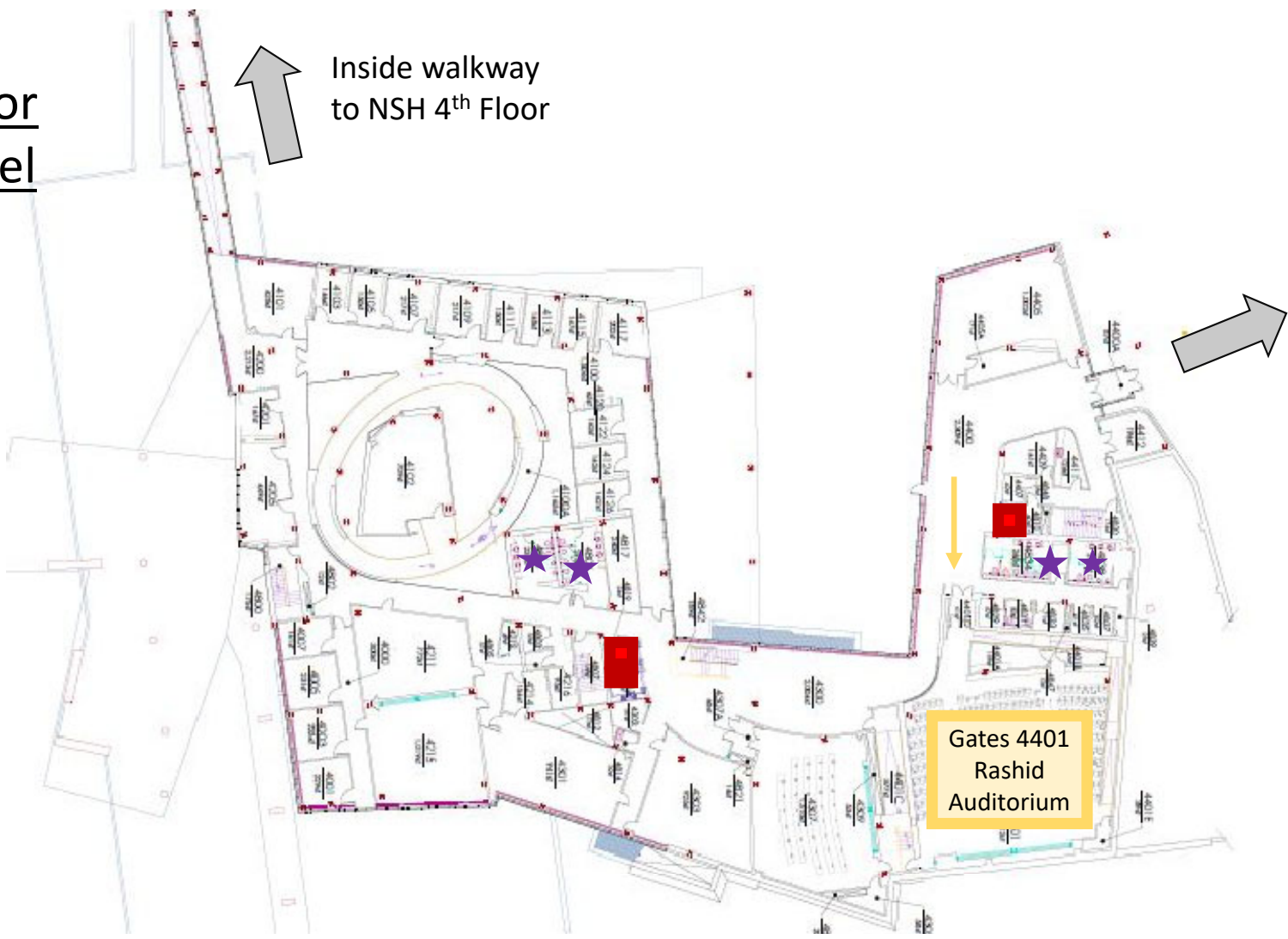
Up to 8/20/23 (Fecich)



Gates Hillman  
Center (GHC)



GHC 4<sup>th</sup> Floor  
Ground Level

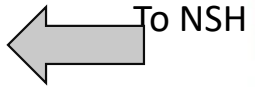


# GHC 2<sup>nd</sup> Floor

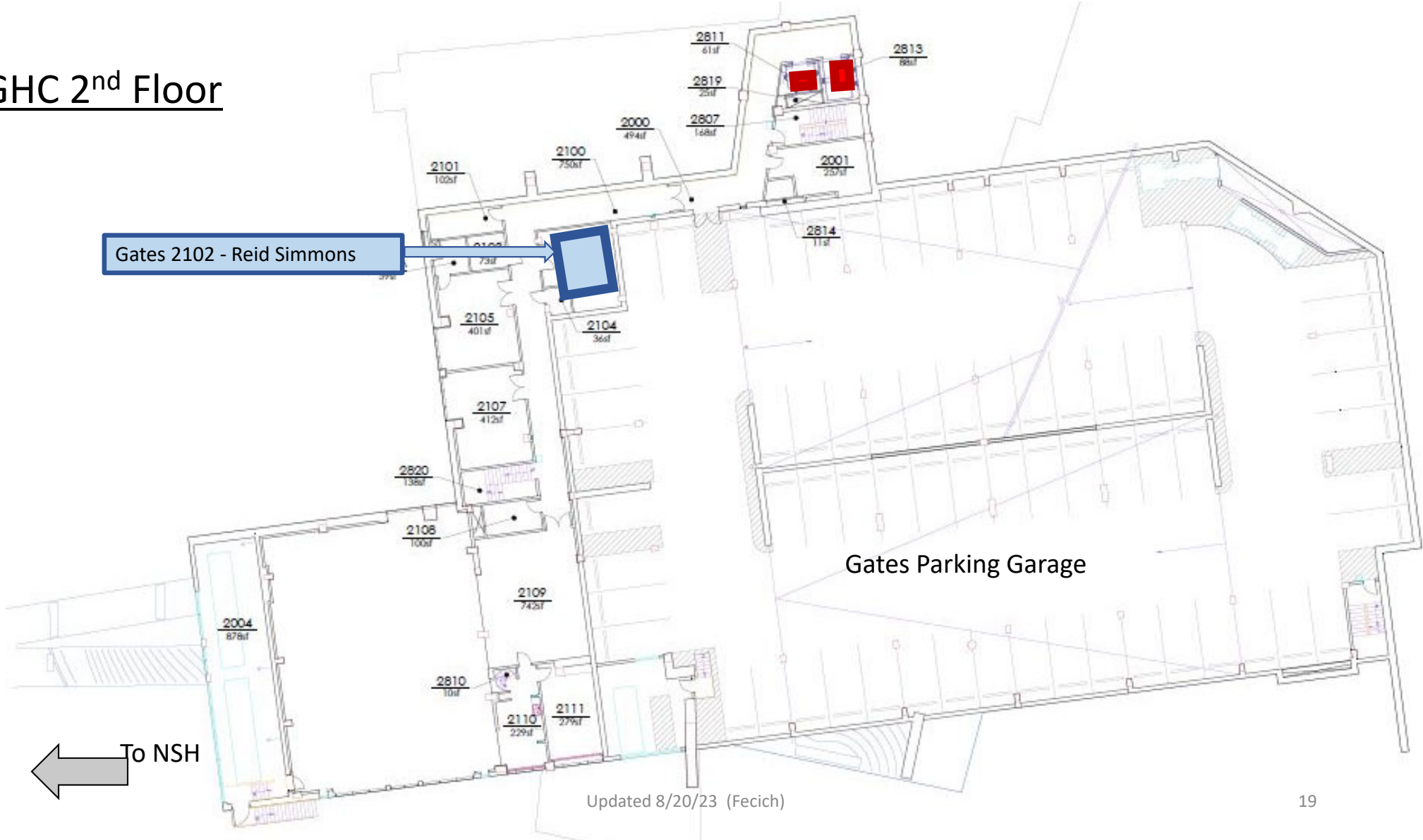
Gates 2102 - Reid Simmons



Gates Parking Garage



Updated 8/20/23 (Fecich)



Elliot Dunlap  
Smith Hall (EDSH)



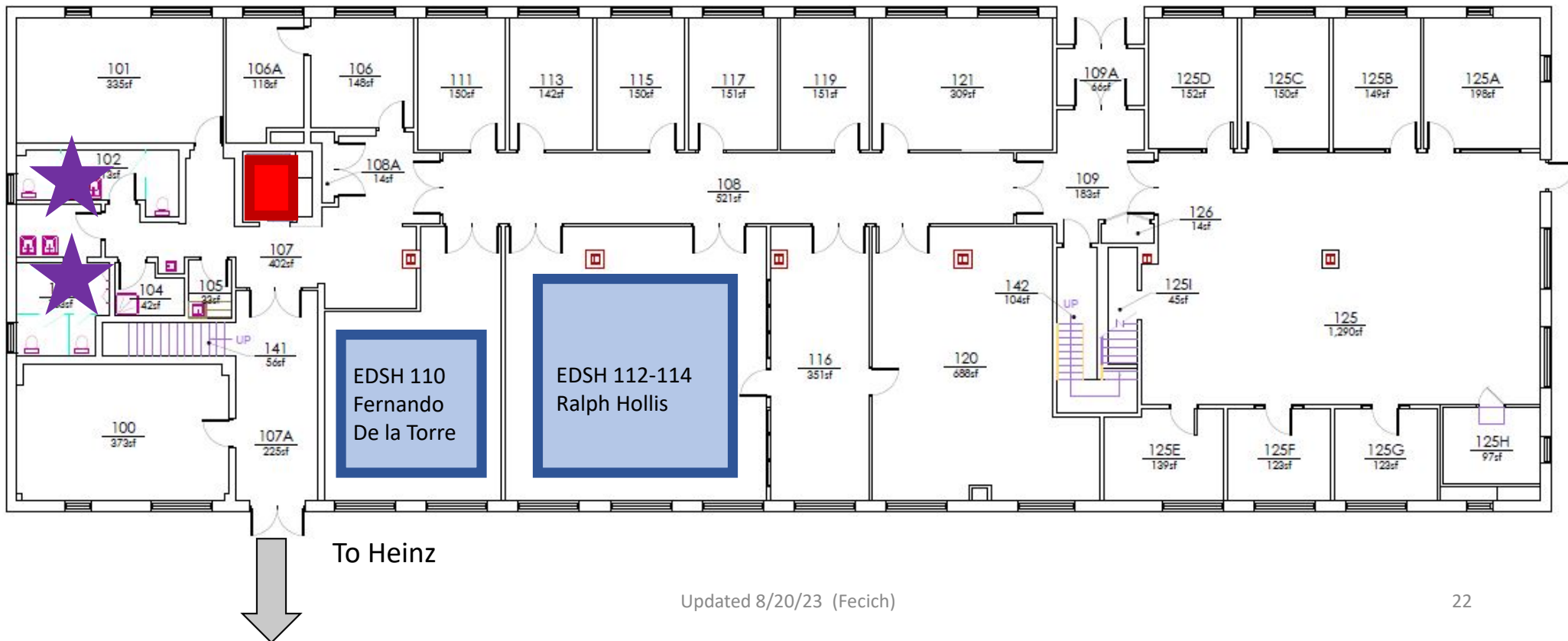
# EDSH 2<sup>nd</sup> Floor



# EDSH 1<sup>st</sup> Floor Ground Level

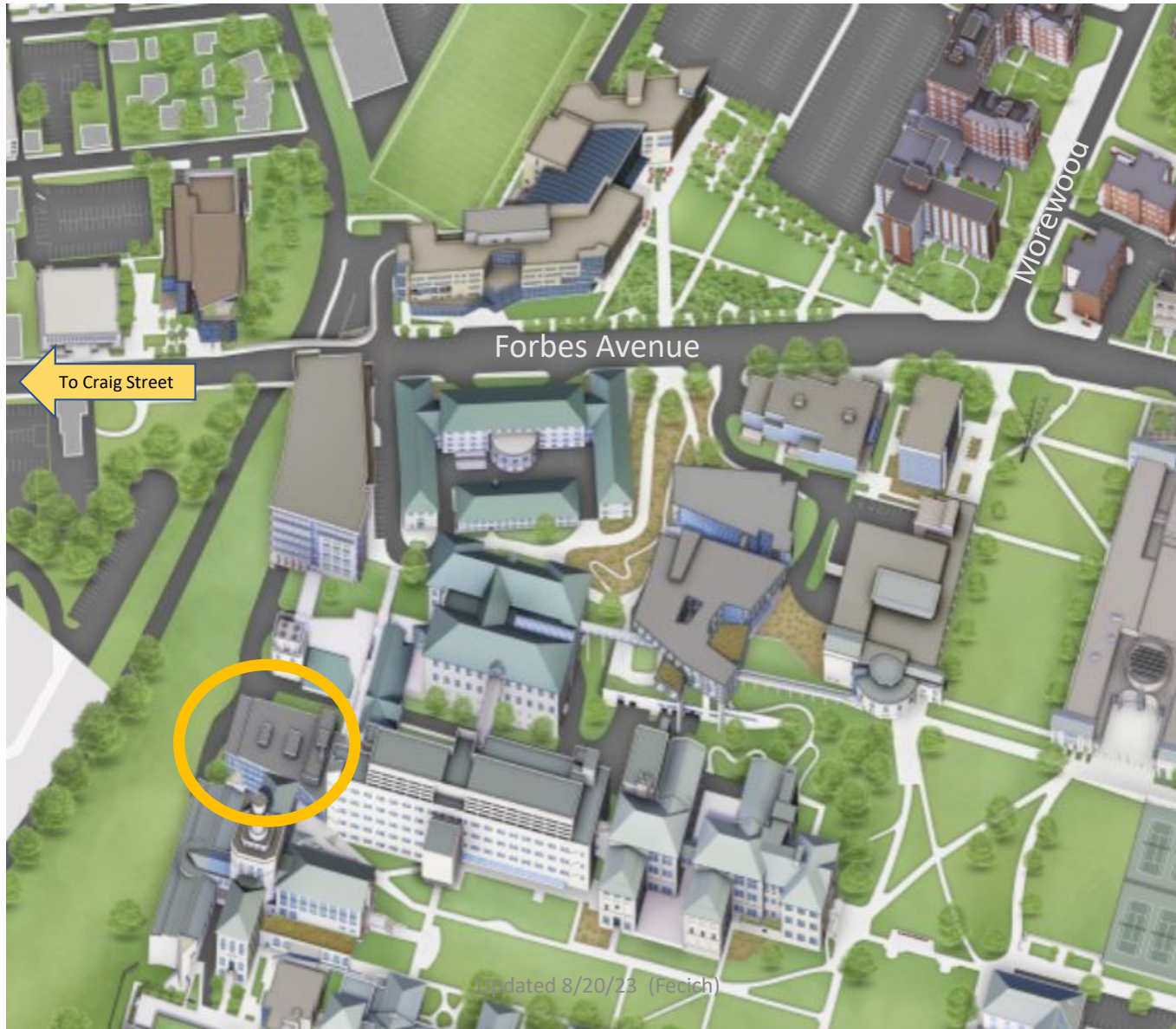
← To GHC

↑ To NSH

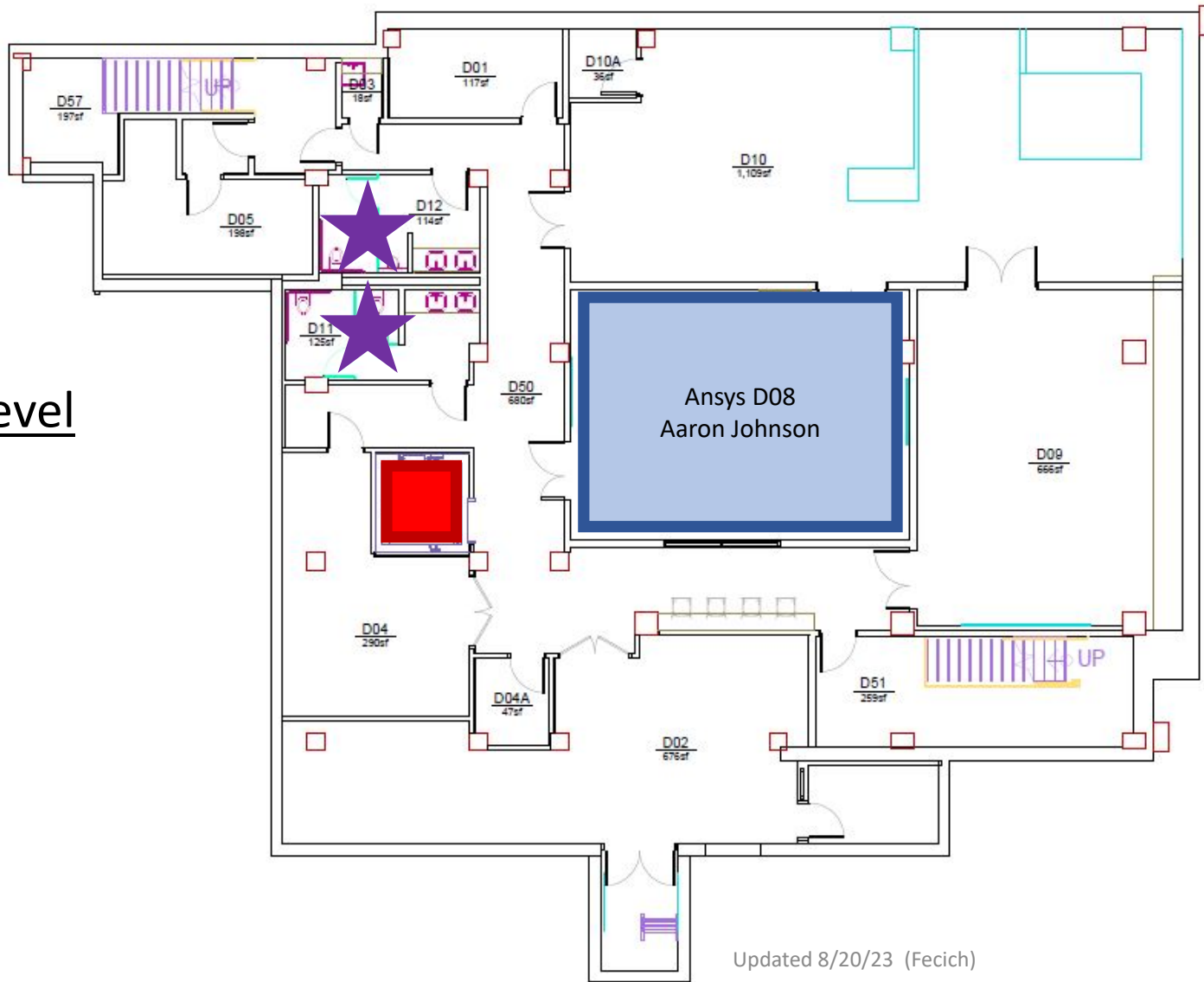


Updated 8/20/23 (Fecich)

Ansys



Ansysis D Level





# RI SQH Transportation Map

## 1723 Murray Ave

Best 9 min 16 min 33 min 14 min

Newell-Simon Hall, Hamerschlag Dr, Pitts

Robotics Institute - Squirrel Hill, Carnegie

Leave now Options

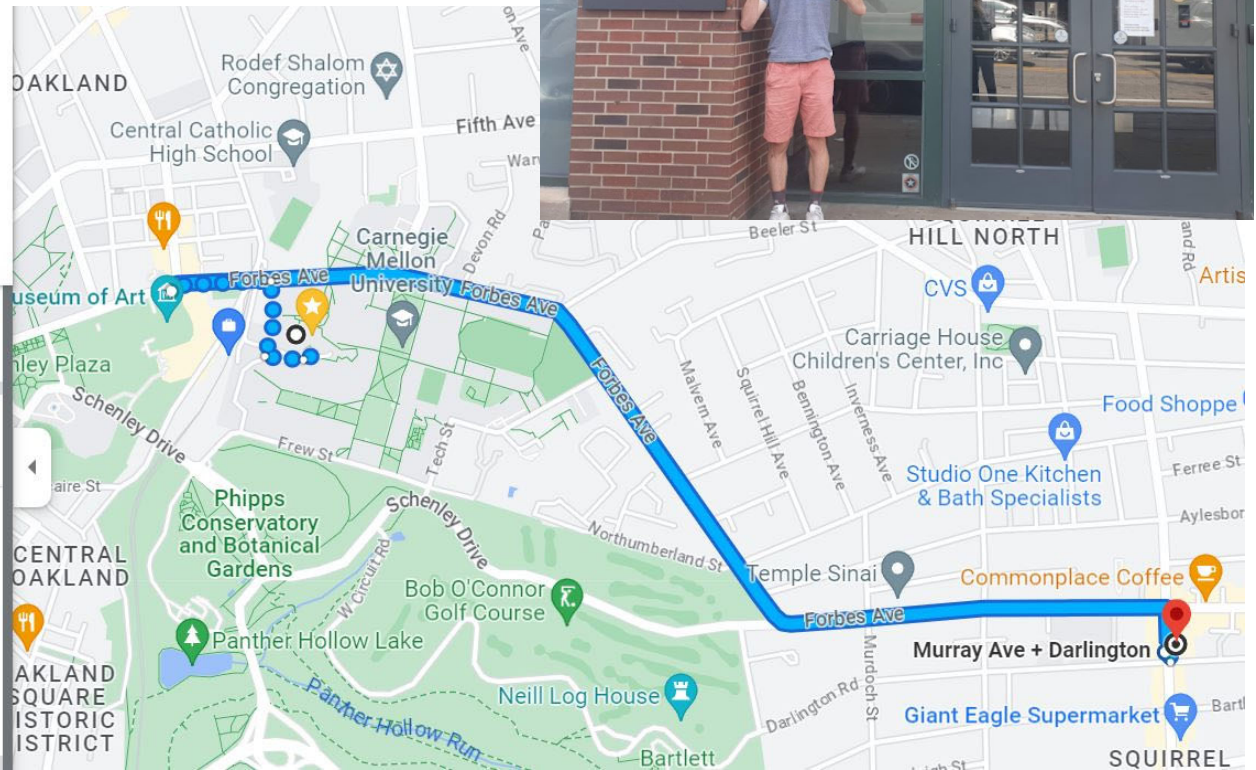
Send directions to your phone

3:38 PM—3:54 PM 16 min

61C 61D

3:44 PM from Forbes Ave Opposite Craig St  
\$2.75 7 min every 8 min

Details



Updated 8/20/23 (Fecich)